



Unlock Talent, Accelerate Innovation

JOURNEY



Our journey began as an incubation start-up at Ignite Startup Accelerator in 2024. Today, we have grown to establish our own identity as Quantum Pulse Technologies in the fields of Advanced Engineering and Talent Solutions.

QP is all about customization and meeting customer needs with step-by-step hand-holding and collaboration to build tailored solutions for your needs. Irrespective of the industry, we offer innovative engineering solutions that will drive impactful business results.



LEADERSHIP TEAM



Mr.R.Rajaram
Managing Director



Mr.R.Mohanram
Director



Mr.Eshwar Ram
Director



Mr.Sathya Narayanan
Director - Business Operations



QP is led by a perfect mix of senior veteran entrepreneurs, young and energetic engineering talent. This makes QP a natural choice for our customers. You get both – the experienced business wisdom and the youthful creativity!



BUSINESS VERTICALS

We offer 3 major services for our customers

RPO Services

We additionally offer customized recruitment process solutions, to scale your business. Our robust RPO solutions effectively attract talent while minimizing hiring time (TAT) and costs.

Design Services

We provide expert design solutions, including PCB design, embedded systems development, concept to co-creation, and built innovative products from concept to market with precision and efficiency.

Proto Build

We offer streamlined prototype build services that accelerate product development across mechanical, electrical, and electronic domains. By closely collaborating with clients, we transform concepts into functional prototypes, ensuring precision, quality, and quick turnaround times with excellent infrastructure.

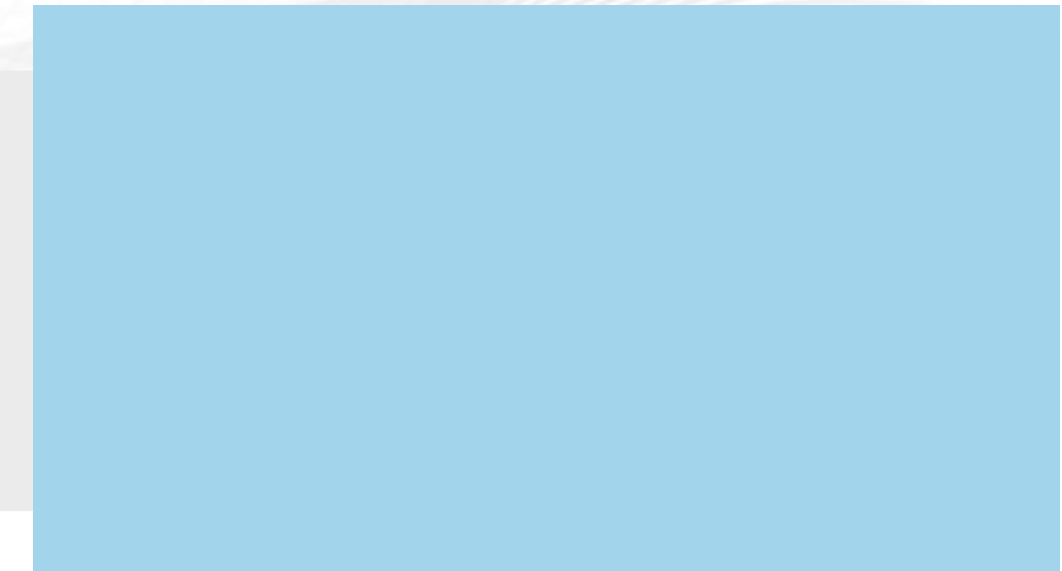
QP - DESIGN

Need the expertise to design your actual product?

We provide expert design solutions, including PCB design, embedded systems development, concept to co-creation, and built innovative products from concept to market with precision and efficiency.

- **End-to-End Product Design & Development Cycle**

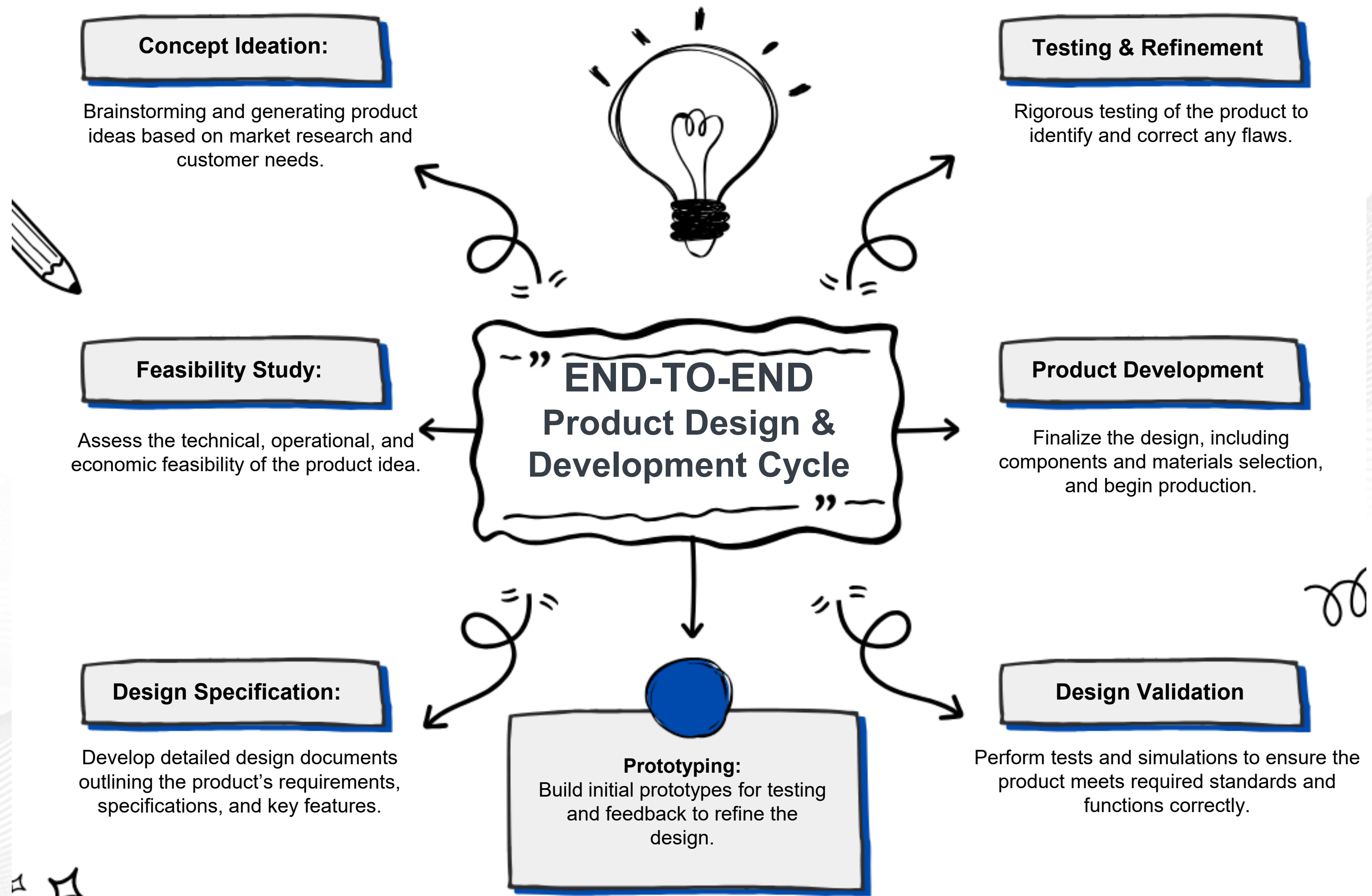
- **Embedded Software Development**



- **PCB & Hardware Design**

- **Prototyping and testing**

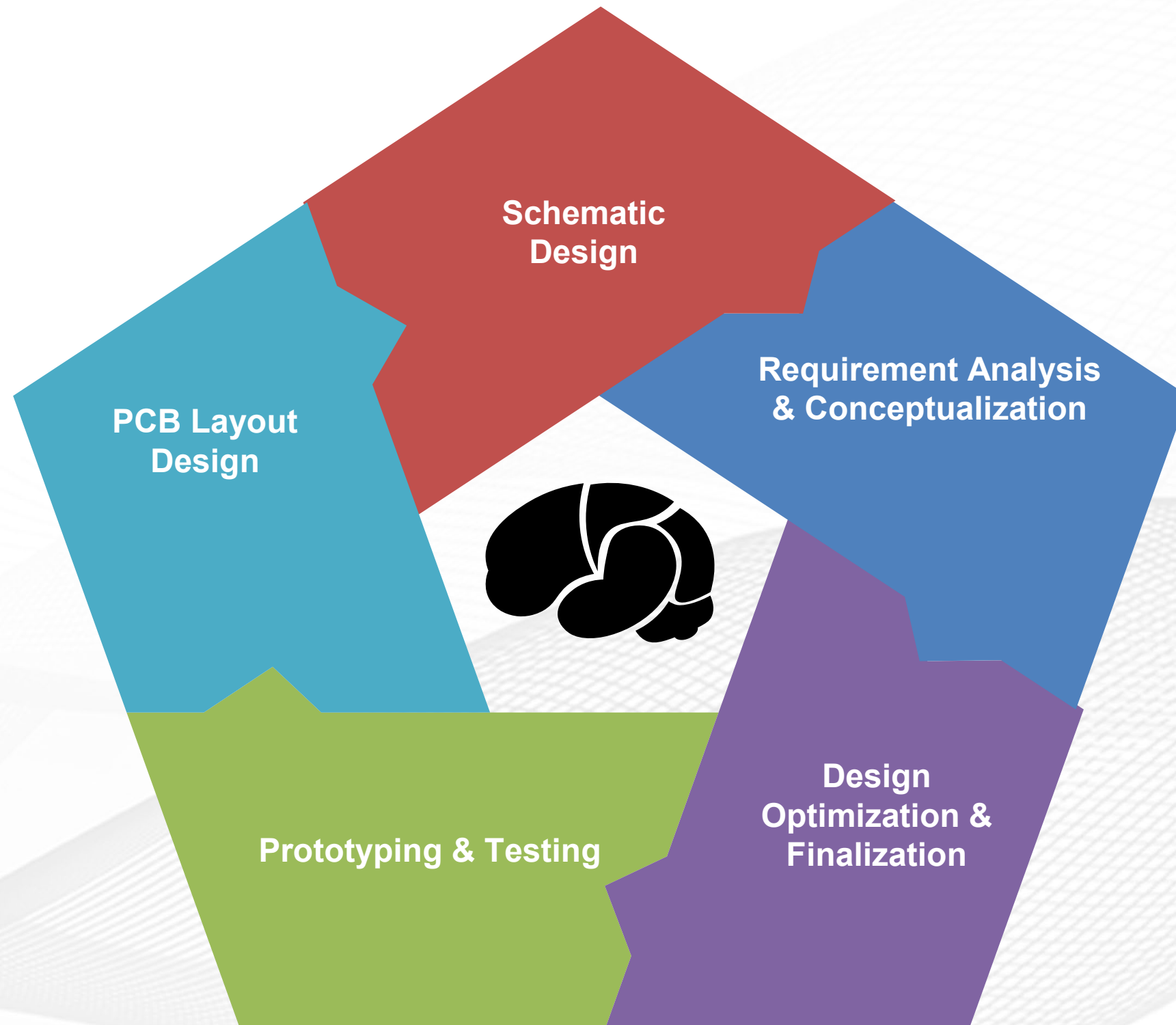




A comprehensive approach that manages the entire product development lifecycle, from concept creation to final product delivery.

PCB & HARDWARE DESIGN

Design and development of printed circuit boards (PCBs) and electronic hardware, which serve as the backbone of electronic devices.



- **Create circuit diagrams** outlining how components will connect and interact within the hardware.
- **Define product requirements, functional specifications and hardware needs** based on the project scope.
- **Make any necessary refinements** based on testing results and **finalize the design** for mass production.
- **Fabricate the initial PCB prototype** and conduct rigorous testing to verify functionality, signal integrity and hardware performance.
- **Design the physical layout of components on the PCB**, optimizing for signal integrity, power distribution, and space constraints.

EMBEDDED SOFTWARE DEVELOPMENT

Developing software designed to run on hardware devices to control their functions and interact with other components.

Requirements Analysis:

Define the software's role and functionality in the hardware system, including communication protocols, data processing, and control mechanisms.

System Architecture Design:

Create the overall structure of the embedded system, outlining software and hardware integration.

Code Development:

Write the embedded code, ensuring it is optimized for resource-constrained environments.

Debugging & Testing:

Test the software for bugs, performance issues, and compatibility with the hardware.

Hardware-Software Integration:

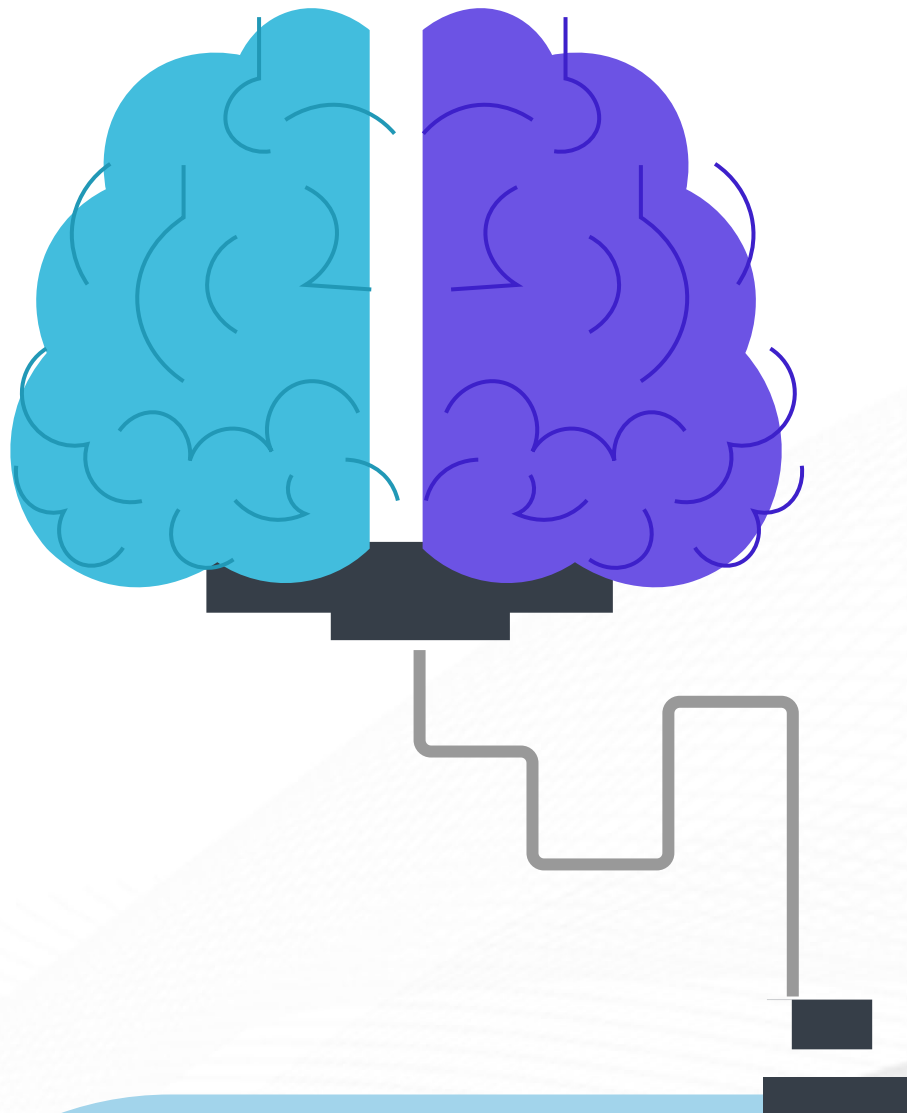
Integrate the software with the hardware to ensure seamless functionality and performance.

Testing & Optimization:

Perform real-time testing to ensure the software operates efficiently under various conditions.

PROTOTYPING & TESTING

The process of **creating a working model or prototype of a product** to test its design, functionality, and usability before full-scale production.



Design Translation

Convert the product's design and specifications into a physical model.

Prototype Creation

Use 3D printing, CNC machining, or other methods to build an initial prototype for physical testing.

Testing & Evaluation

Test the prototype for performance, reliability, and user experience under different conditions.

Feedback & Iteration

Gather feedback from testing and refine the prototype accordingly.

Functional & Stress Testing

Conduct rigorous testing to assess the product's functionality under normal and extreme conditions.

QP - HIRE

Feeling confident of your design and wish to scale your business?

We additionally offer customized recruitment process solutions, to scale your business. Our robust RPO solutions effectively attract talent while minimizing hiring time (TAT) and costs

RPO

Recruitment Process
Outsourcing (RPO)

One-Time
Placements

Permanent
Placements

Project-
Based
Placements

Talent
development
program





One-Time Placement

- QP offers a **one-time placement service**.
- Candidates are **sourced based on the job description (JD)** provided by the client.
- The QP recruitment team **collaborates with the client to screen and select candidates**. Candidates are evaluated to meet both the technical and cultural requirements of the client.
- The process ensures a **seamless hiring experience**. Selected candidates are **placed permanently at the client's location after the selection**.

Permanent Staffing

- QP specializes in **recruiting technical staff** for deployment to the client's site.
- Recruited staff remain on **QP's payroll** throughout their **placement**.
- Placements typically last for **a minimum period of 12 months**.
- Clients benefit from flexibility as employees **integrate directly into their workflow**. QP manages **recruitment, payroll and administrative responsibilities**.
- This model provides a **long-term, committed workforce**.
- Clients avoid the burden of immediate **permanent employment contracts**.



Project-Based Placements



QP offers a **project-based placement model** for specific projects that need technical expertise for a limited time.



Technical staff are hired and deployed to **work with clients** for 3 to 6 months on various projects.



This model is ideal for companies that need **specialized skills** for short-term projects or urgent requirements.

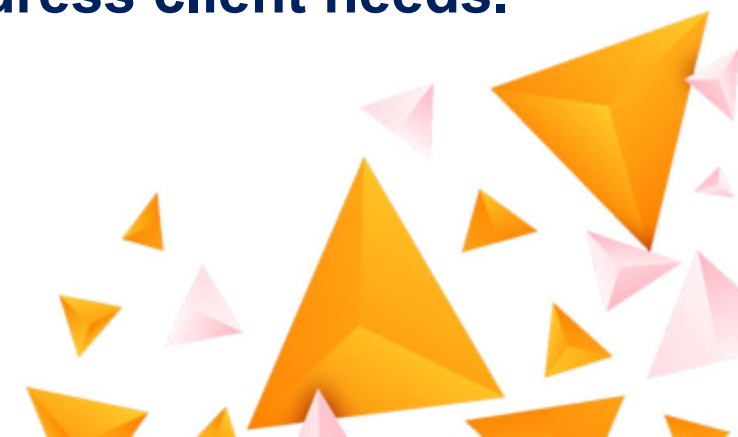


It allows clients to **avoid long-term hiring commitments** while ensuring timely project execution.



Talent Development

- QP invests in nurturing fresh talent by hiring recent graduates and providing **six months of training** at QP's facilities.
- Graduates are trained in various **design skills** and **industry-specific knowledge** to meet client expectations.
- After completing the training program, these skilled individuals are **placed directly at the client's site** and join the client's payroll.
- This model ensures a consistent flow of **skilled professionals**, specifically trained to address client needs.





HOW WE WORK

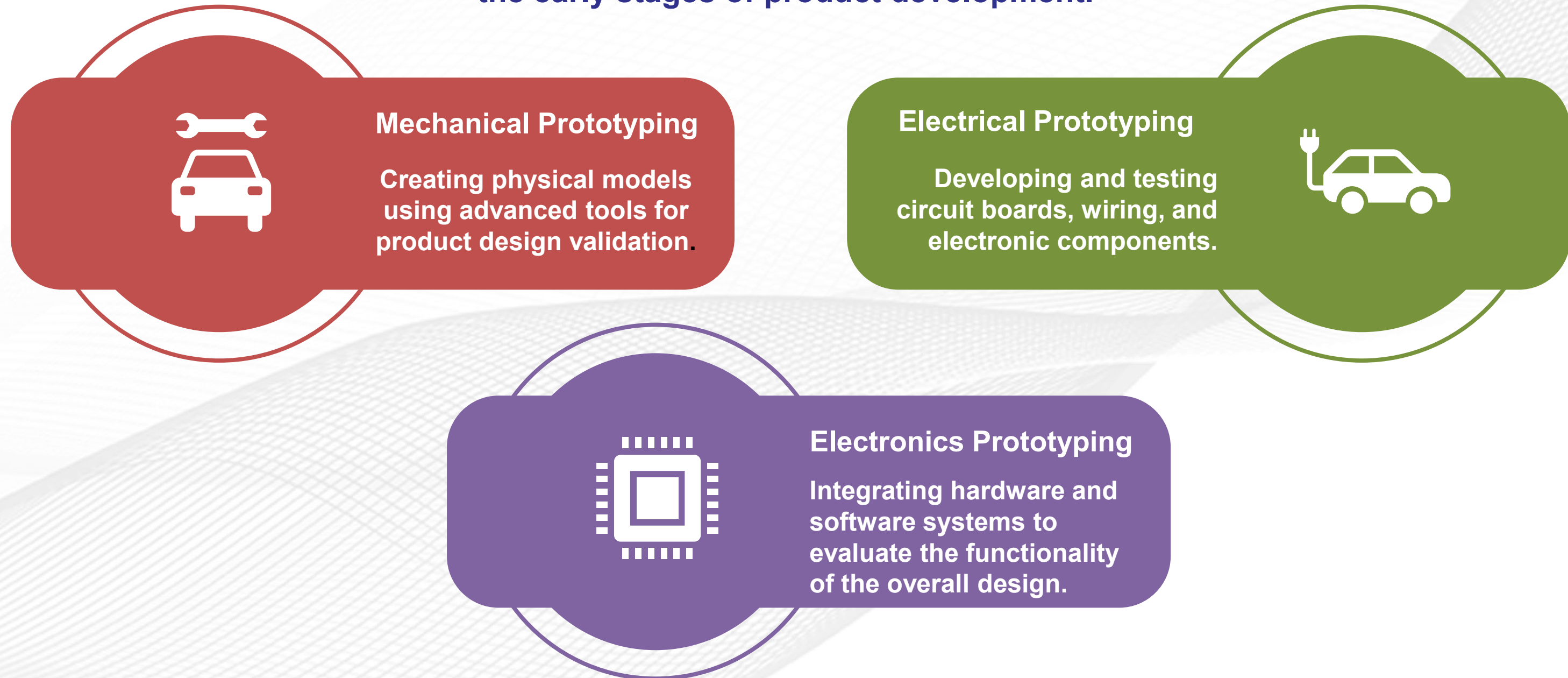


PROTO BUILD

Conceptualization to Prototyping:

“Have a concept that you wish to try and don't know how to start?”

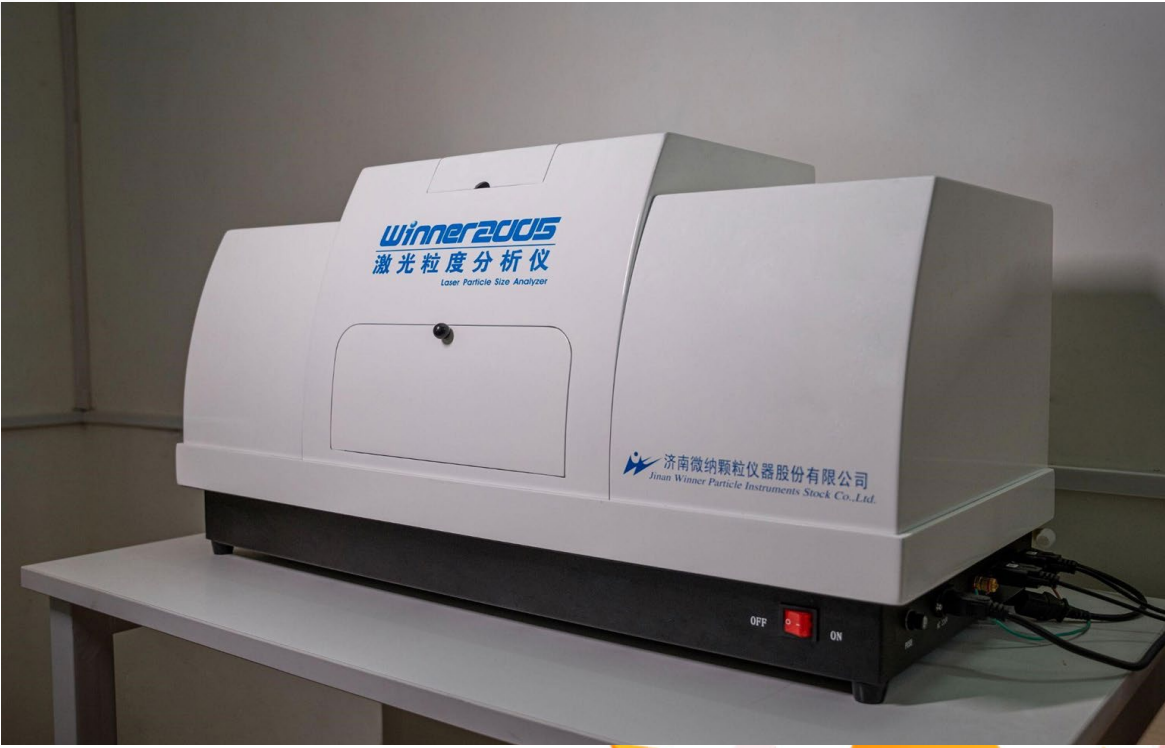
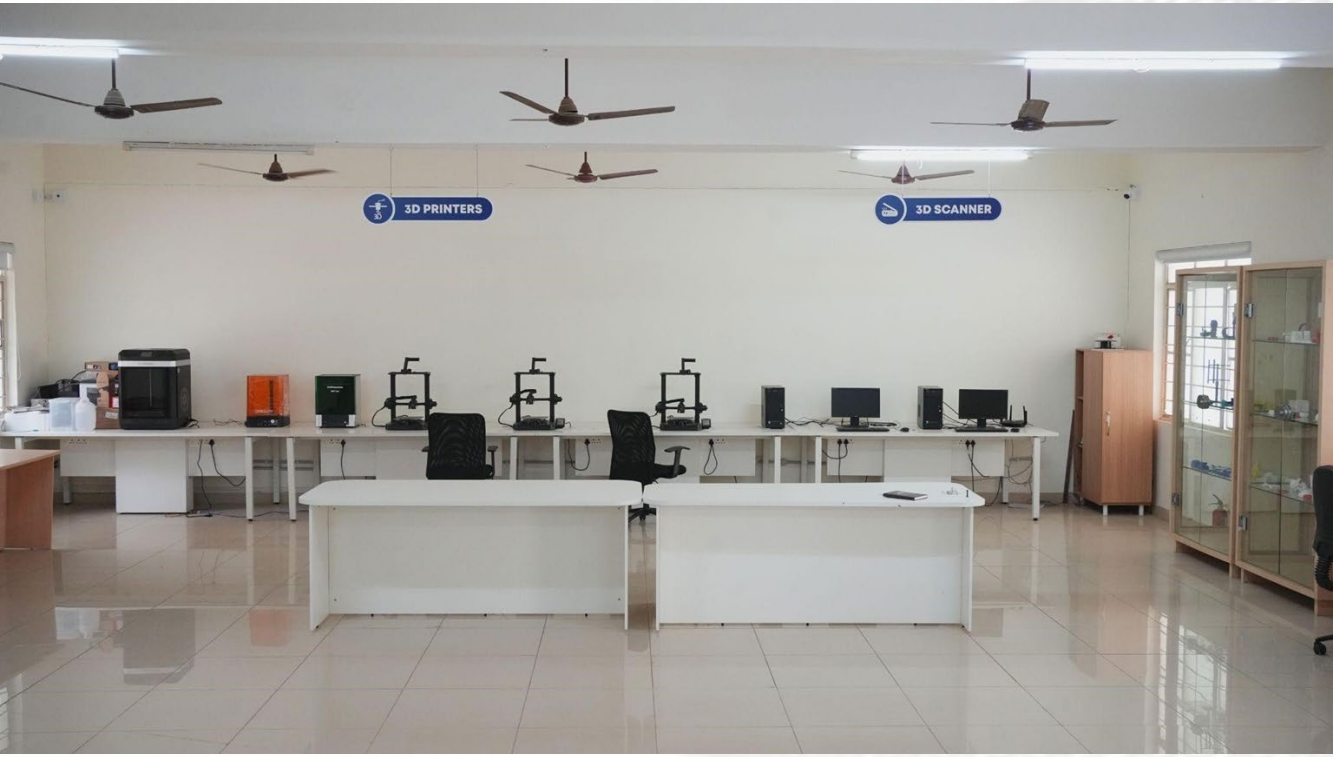
We transform product ideas into tangible prototypes, enabling real-time testing and evaluation for better decision-making in the early stages of product development.



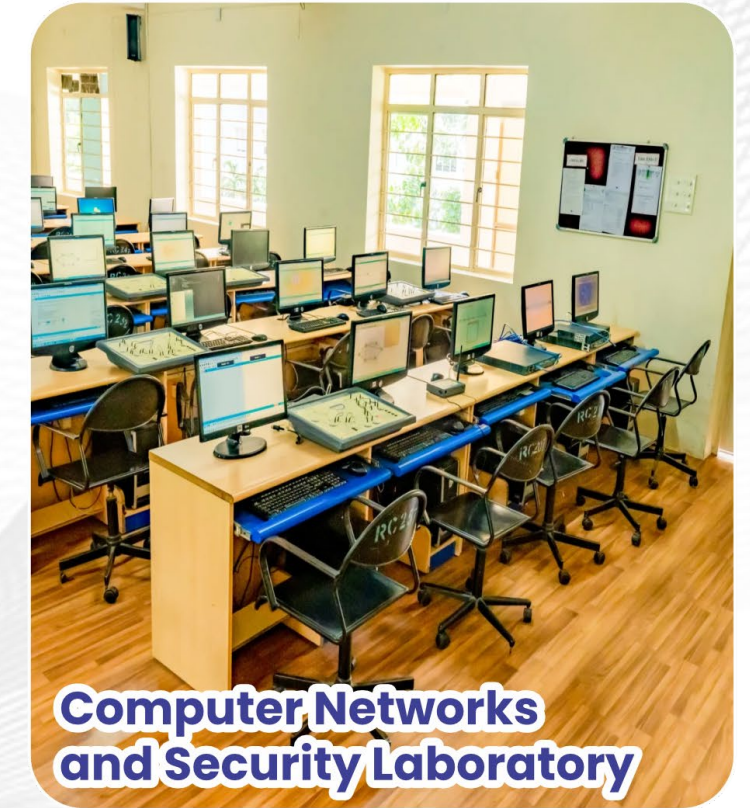
Industries We Serve: Consumer Electronics | IoT Devices | Automotive Components



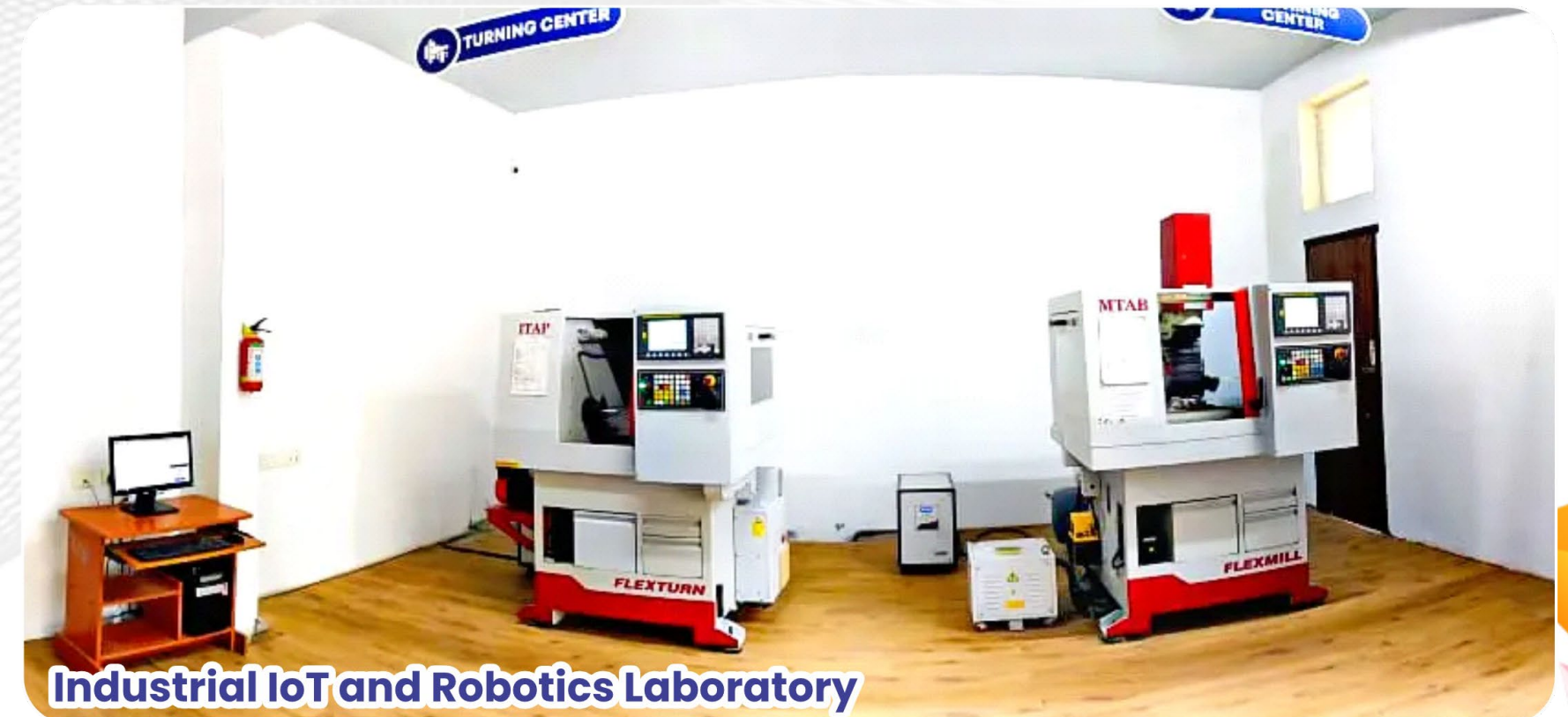
INFRASTRUCTURE



INFRASTRUCTURE



INFRASTRUCTURE





Customers



THANK YOU



Kochar Globe, 6th Floor, Smartworks, Guindy, Chennai



**9840854724
9952229211**



**essn@quantumpulse.ltd
info@quantumpulse.ltd**



www.quantumpulse.ltd

